

[mm]	[mm]	[mm]	[mm]	[mm]	[mm]	[mm]	[mm]	[mm]	[mm]	[mm]	[mm]	[mm]	[mm]
16	32	90	34	90	32	115	32	30	30	35	50	200	
20	36	105	38	105	32	130	32	40	36	40	60	350	
25	40	115	42	115	41	150	41	40	41	45	70	700	
28	45	125	48	125	41	170	41	45	46	50	85	950	
32	52	140	55	140	50	180	50	50	50	60	100	1600	**
40	65	160	68	160	60	210	65	70	60	70	120	2900	**
50	80	200	84	200	80	240	80	80	80	85	150	8000	**
63.5	102	260	106	260	102	260	90	110	100	115	250	8000	**

* Placile de fixare a ancorelor pot fi livrate la orice dimensiune ceruta de client

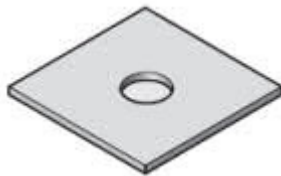
** Cuplu de strangere aplicat piulitei auto-blocante folosind o cheie dinamometrica hidraulica

(a) Cuplor turnat

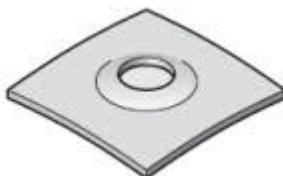
(b) Cuplor prelucrat mecanic

Placi

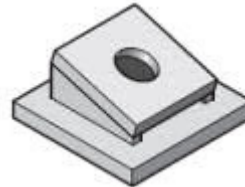
Placa plana



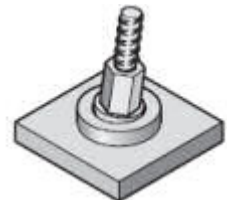
Placa curbata (up to 20°)



Placa articulata (up to 30°)

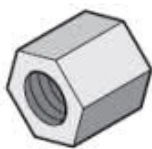


Placa guseu (up to 45°)

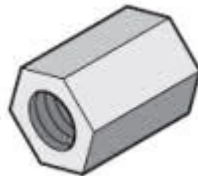


Piulite

Piulita auto-blocanta



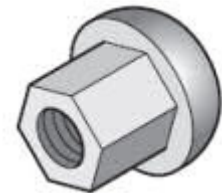
Piulita hexagonala



Piulita cu flansa



Piulita in forma de calota



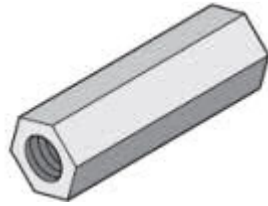
Cuplor

Cuplor static

Cuplor dinamic

Cuplor de strangere/contact

Cuplor de trecere



Accesorii

Tub/manta

Saiba tronconica (pana la 15°)

Saiba semisferica (pana la 30°)

Toarta de tragere

